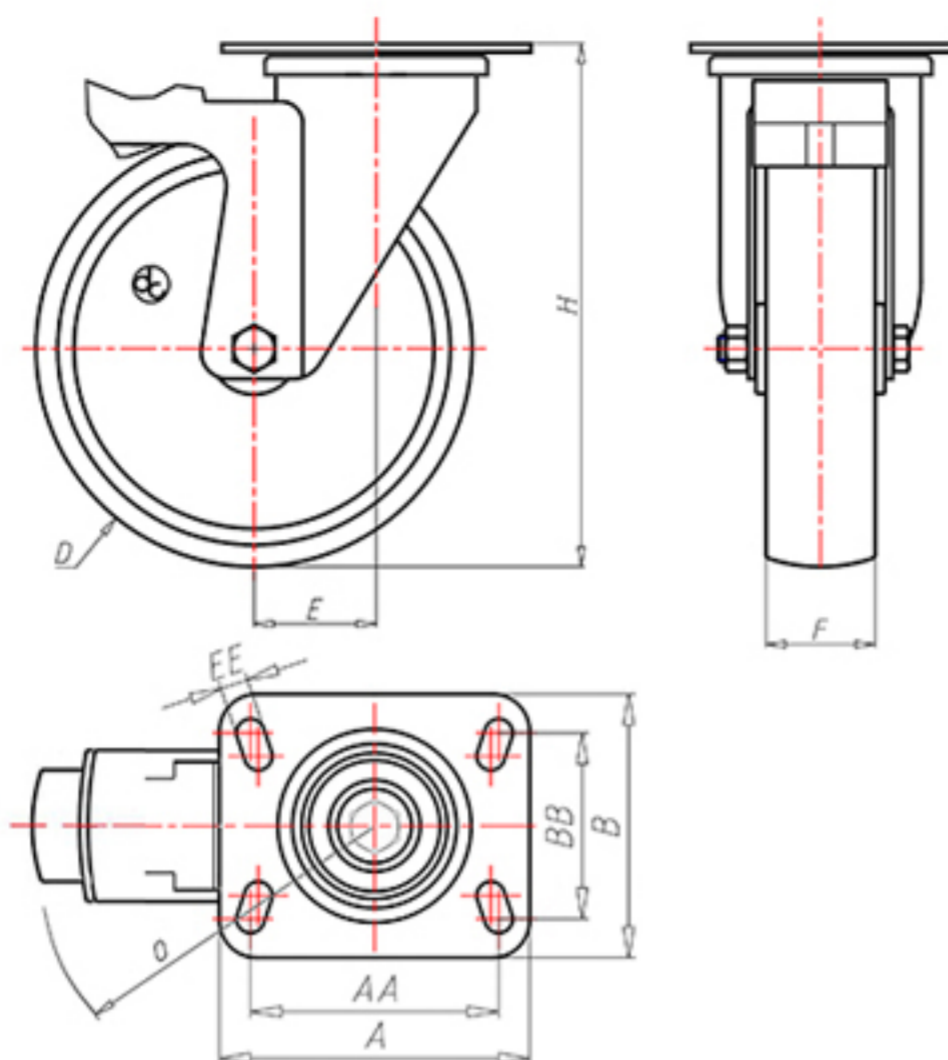


D-NAMIC

92 Shore A  
+90°C  
-40°C

INOX



	D	100
	F	33
	H	131
	AxB	100x85
	AAxBB	80x60
	EE	9
	E	42
	O	124
	LC	250



Code for plain bore wheel

XNGX10045PFS



Code for wheel with Inox roller bearing

XNGX10045PRXFS



Code for wheel with double sealed ball bearing

XNGX100PCFS



Code for wheel with double sealed Inox ball bearing

XNGX100PCXFS

